

Patriot Dart Gap Schemes and Play-Action Complements

Ron Wingenbach

Century High School

Bismarck, ND

Head Football Coach

ron_wingenbach@bismarckschools.org

NHSACA Football Clinic – Lincoln Nebraska

July 28th , 2021

Coaching Influences

Hank Biesiot (DSU)

Rob Bollinger (UND)

Gus Bradley (DC – Las Vegas Raiders)

Chris Klieman (K-State)

Dale Lennon (AD – UMary)

Myron Schulz (Former HC – Umary)

Player Influences



Player Influences



Player Influences



Clinic Goals

1. Relate the development of our Gap Schemes (Wrap & Dart) and how it relates to our overall offensive structure.
2. Illustrate blocking schemes vs. base fronts.
3. Review Play-Action/Boot rules (Passing game).
4. Demonstrate Play-Action/Boot passes off run action described in presentation.

Outline

1. Predicate how our run game (gap scheme) is based on defensive alignment.
2. Describe how these schemes complement Counter & Power
3. Demonstrate how misdirection (Wrap & Dart) enhances our naked/boot passing game.

Wrap

- 1. Based on an isolation play where we have to account for the backside LB.**
- 2. Can run from 2-Back or 1-Back or Empty formation (5 man box).**
- 3. Physical downhill play - mirrors what we want to be offensively.**

Wrap Rules:

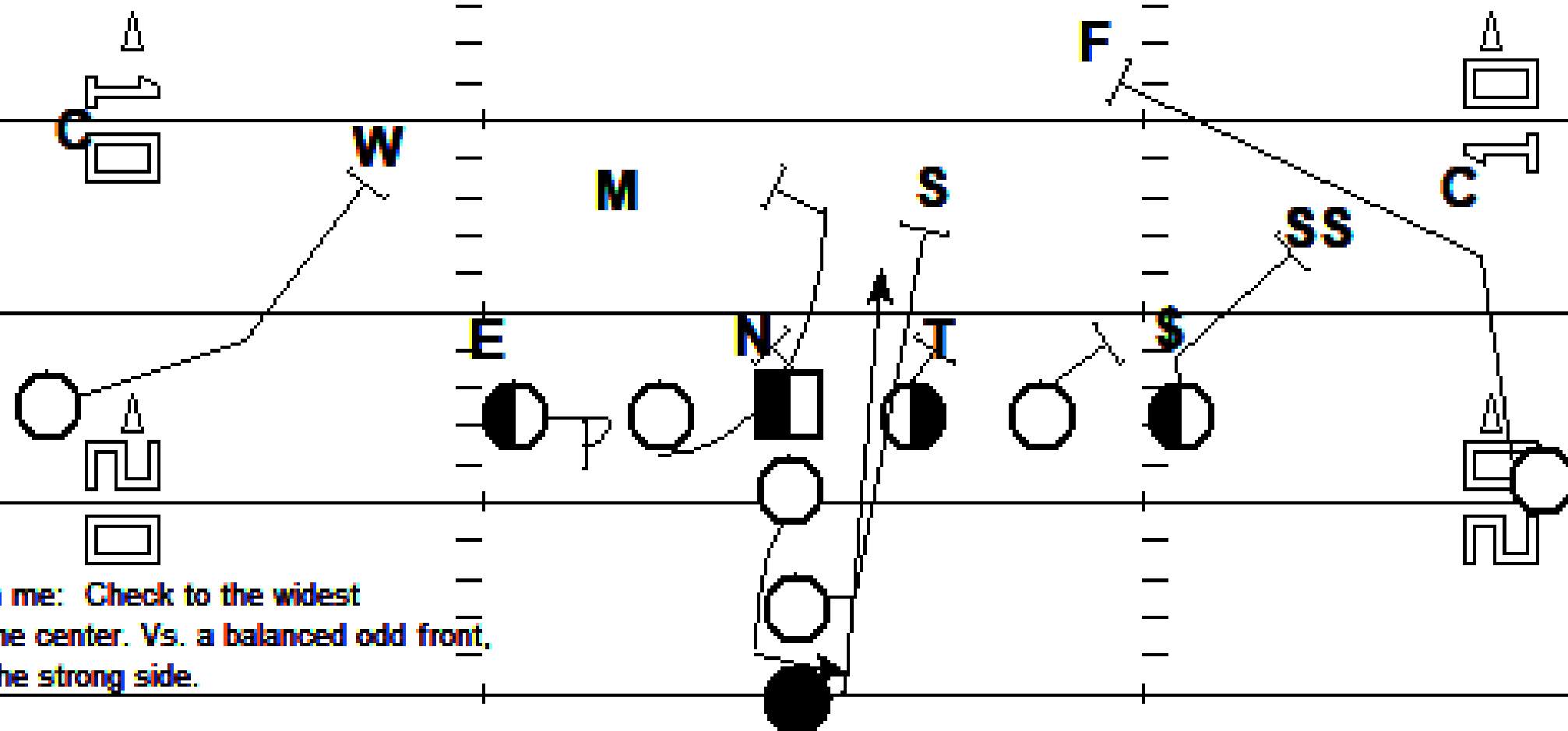
- PS Tackle - Man on with inside footwork
- PS Guard - Man on with inside footwork
- Center - Block the backside A gap
- BS Guard - Pull for backside ILBer
- BS Tackle – hinges to backside B gap to C gap
- TE – Man on with inside footwork
- FB – Fill technique...block callside LBer.



23-24 Wrap

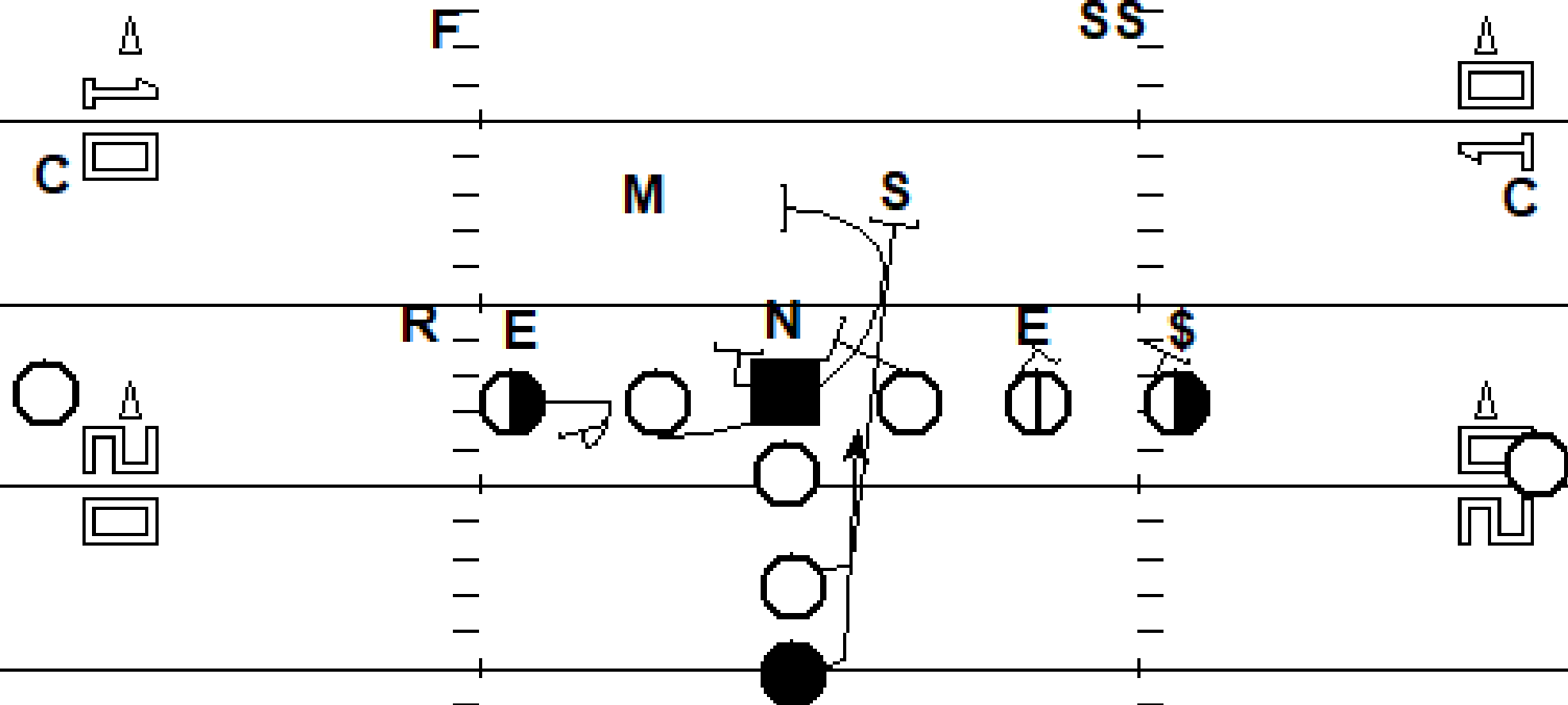
Prefer to run to the widest shade.

3 Tech. or wider



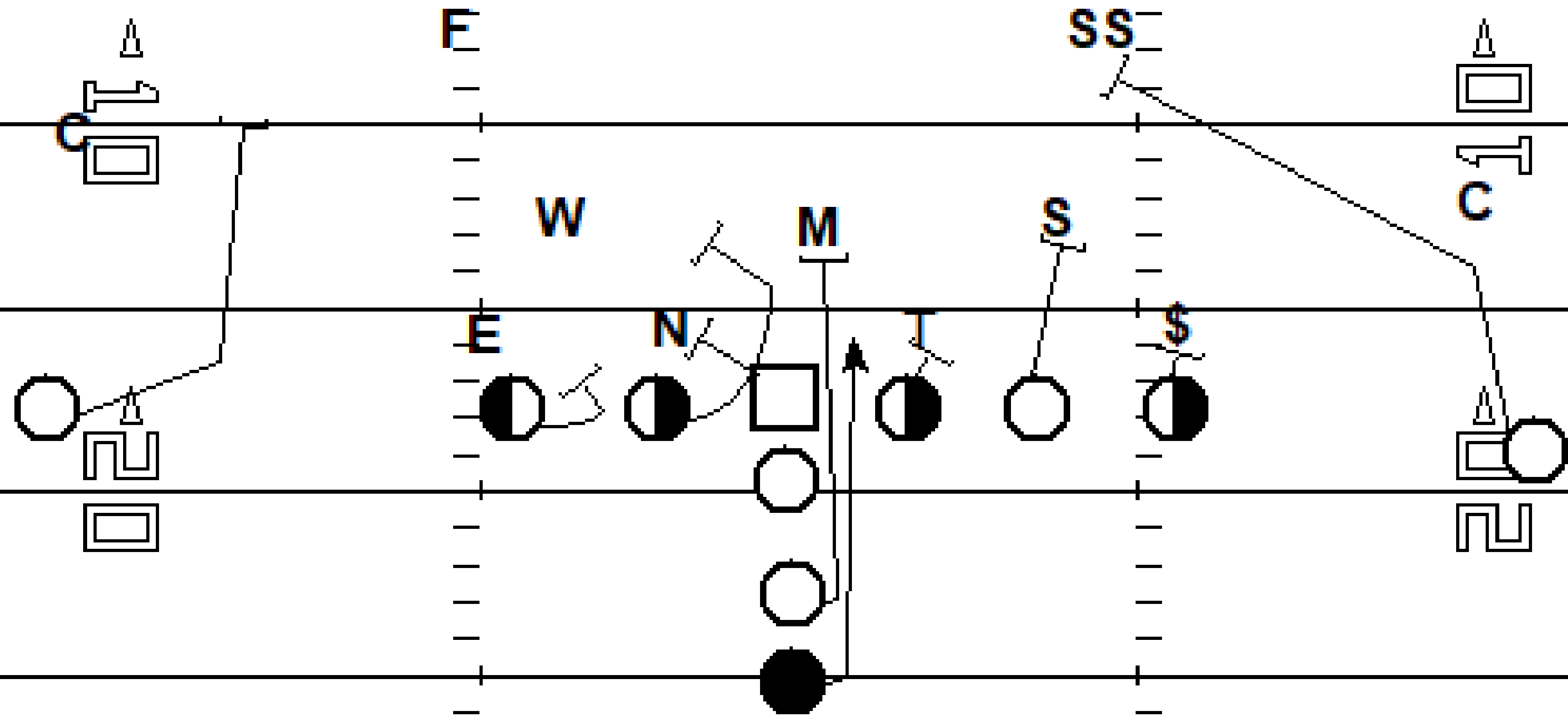
Odd Front
(3-4; 3-3)

23 - 24 Wrap



Even 4-3

23 - 24 Wrap



Dart

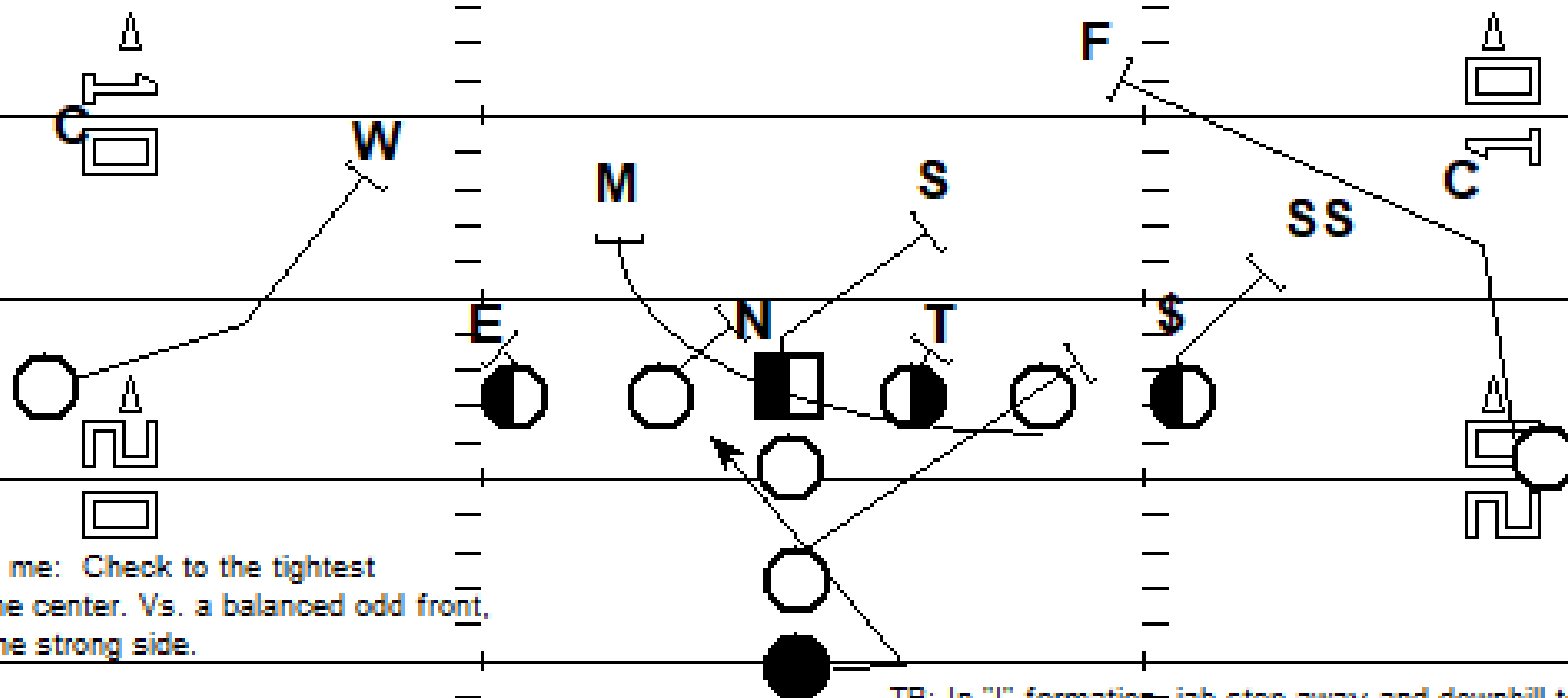
- 1. Coach Tackle Wrap (Dart) as we would one back Power.**
- 2. Great misdirection to our sprint out and jet series.**
- 3. Allows for multiple ball carriers (Terry (R), Tiffany (QB), Tami (QB – Jet action)).**

Dart Rules

- PST & TE – Man on with inside footwork
- PSG & C – Double team with C to backside Lber
- BG – Block back (B gap defender; DE or 3 technique)
- BST – Pulls for frontside ILB
- FB – Block back C gap to wider

Prefer to run to the tightest shade.
of the Center

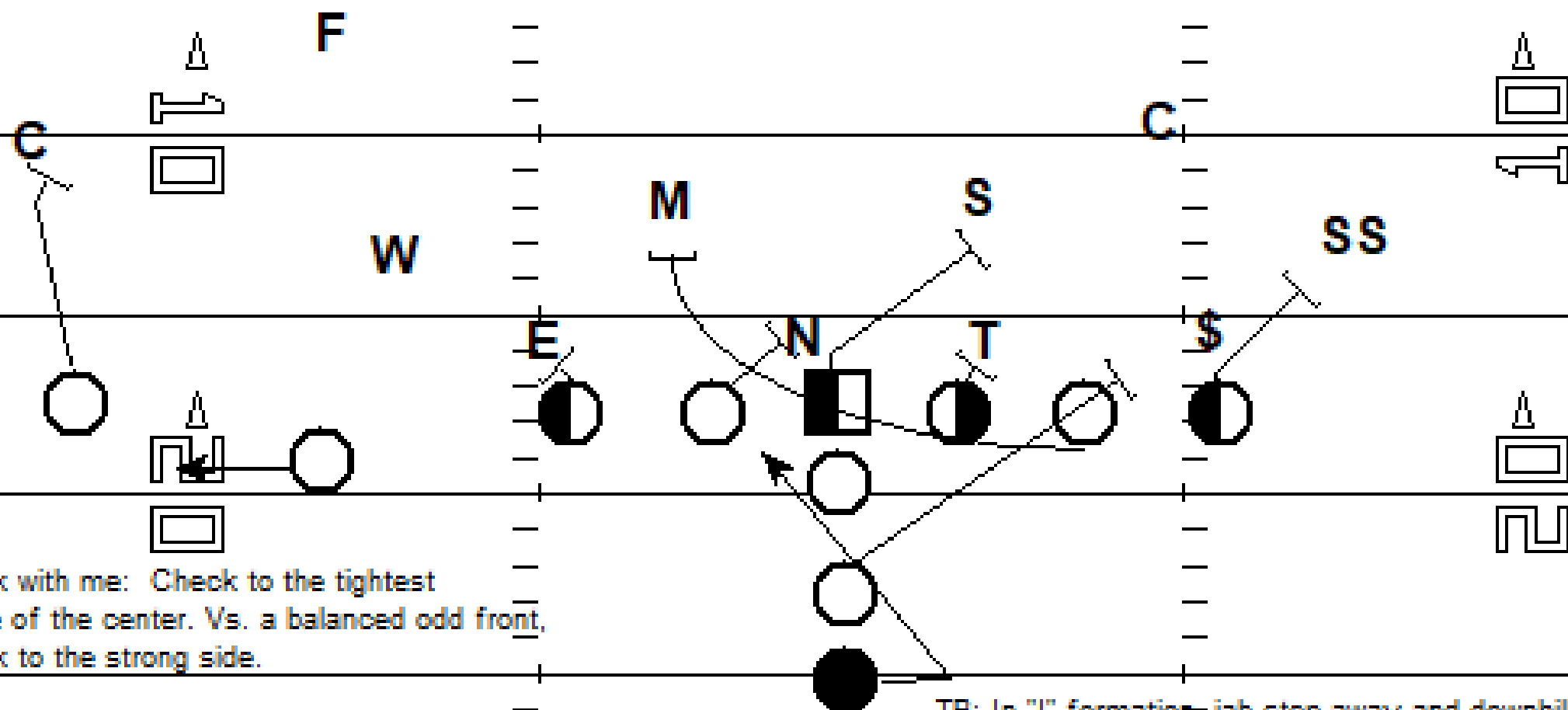
23-24 Terry



TB: In "I" formation, jab step away and downhill to A gap.

Prefer to run to the tightest shade.
of the Center

23-24 Terry Zombie (vs. 4-2-5)



Check with me: Check to the tightest
shade of the center. Vs. a balanced odd front,
Check to the strong side.

TB: In "I" formation, jab step away and downhill to A
gap.

Check to the tightest shade!

Terry: TB carries

Tiffany: QB carries

Tami: QB carries with Jet Sweep

Action!

23 - 24 Terry Draw (vs. Odd Front)

Is he a threat?

F

C

R

M

S

W

C

S

T

N

T

Check to the tightest shade.

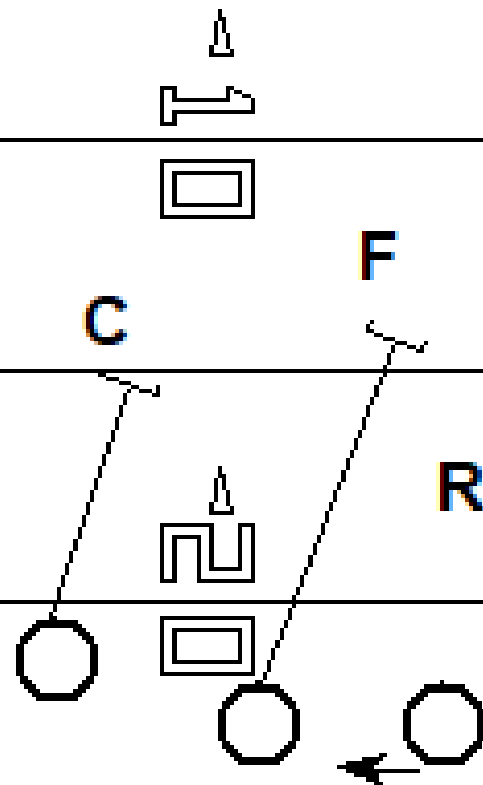
R- Quick 1-2-3

vs. man on and man outside, look at
Tackle Trap vs. Tackle Wrap. Could
possibly influence block @ POA as well.
No double team on NG as PSG would
base block the Sam LBer.

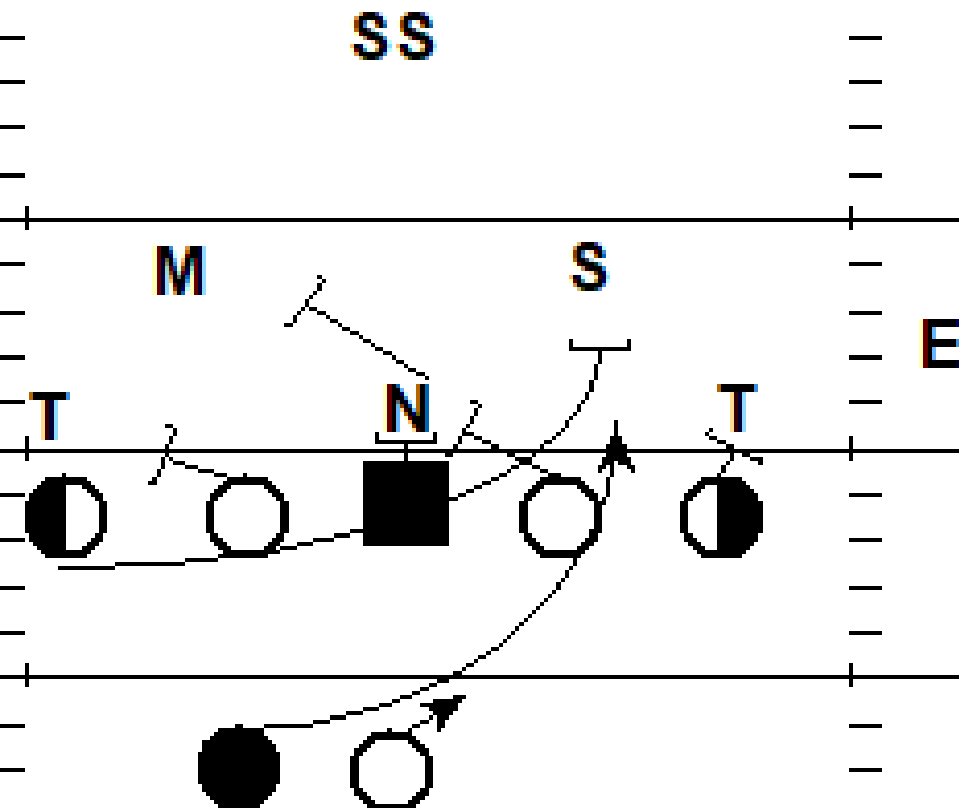
Tami: QB carries with Jet Sweep

23 - 24 Terry (Vs. Odd Front)

Action!



—Check to the titest shade.



Check to the tightest shade!

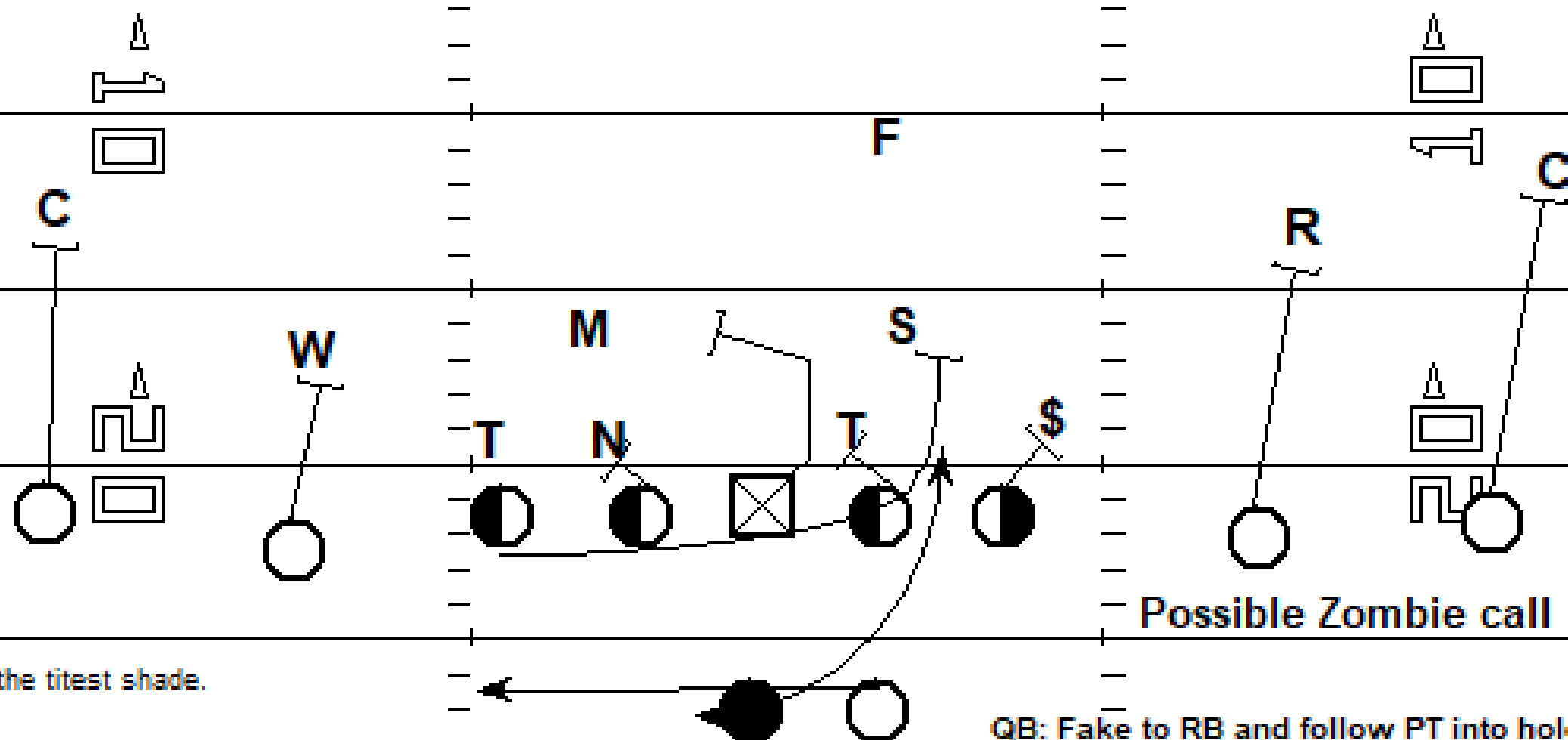
Terry: TB carries

Tiffany: QB carries

Tami: QB carries with Jet Sweep

Action!

23 - 24 Tiffany



Check to the tightest shade.

QB: Fake to RB and follow PT into hole.

Check to the tightest shade!

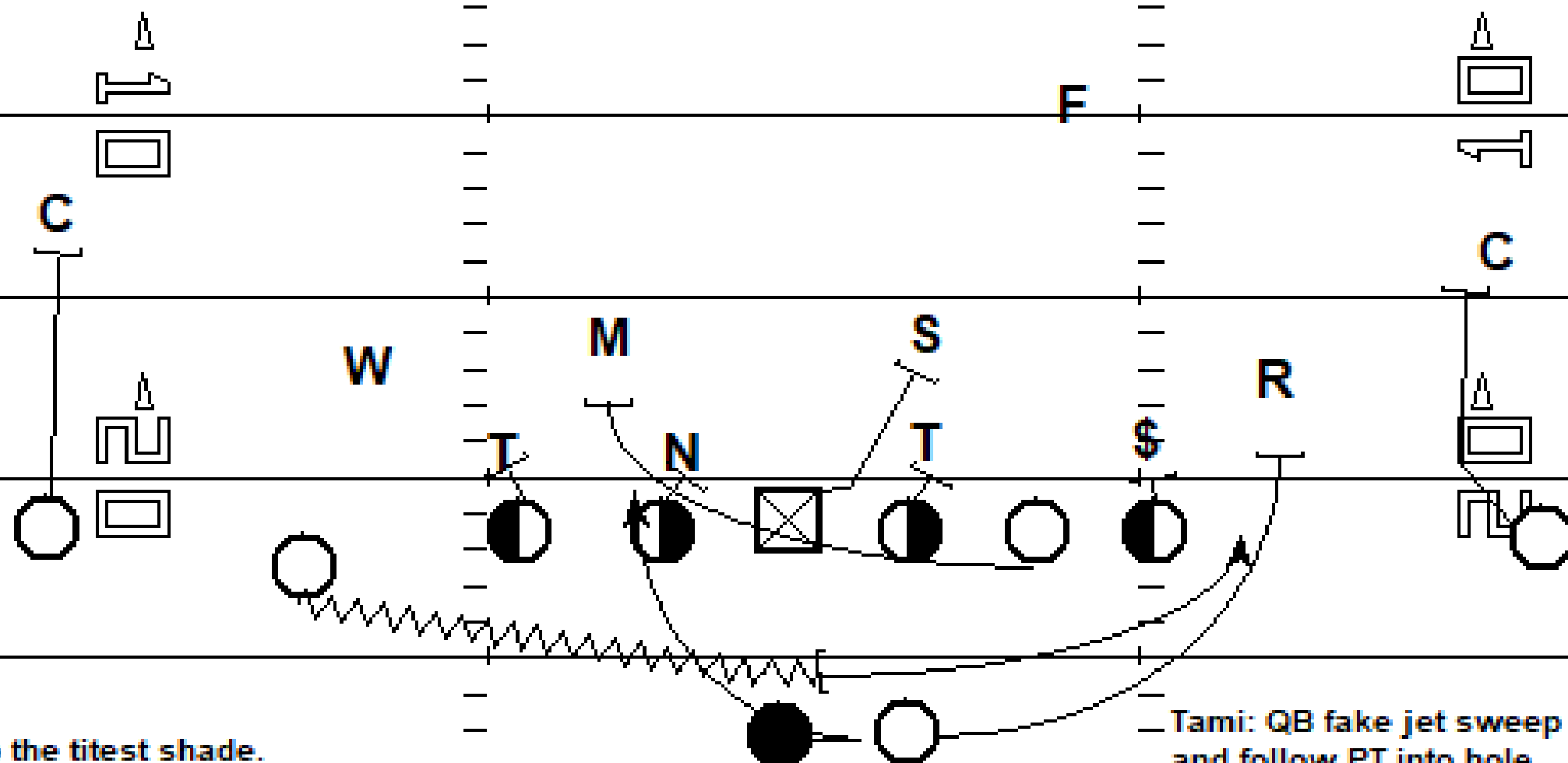
Terry: TB carries

Tiffany: QB carries

Tami: QB carries with Jet Sweep

23 - 24 Tami (Vs. Even Front)

Action!

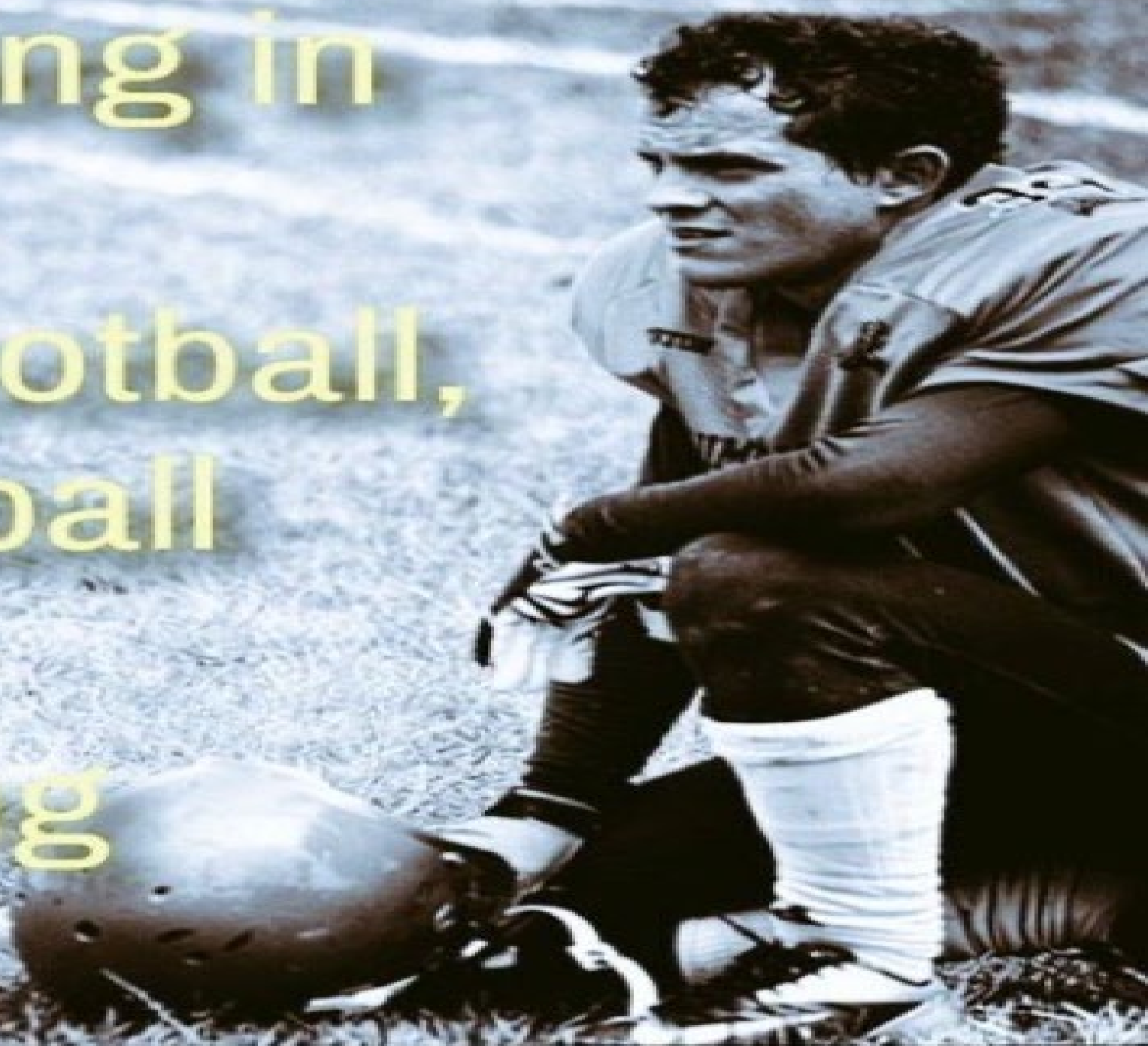


Check to the tightest shade.

Tami: QB fake jet sweep action
and follow PT into hole.



“Everything in
life isn’t
about Football,
but Football
is about
everything
in life!”



Patriot Dart Gap Schemes and Play-Action Complements

Ron Wingenbach

Century High School

Bismarck, ND

Head Football Coach

ron_wingenbach@bismarckschools.org

NHSACA Football Clinic – Lincoln Nebraska

July 28th , 2021

